

INDEX OF DRAWINGS

SHT NO.	DWG NO.	SHEET TITLE
1	0001	TITLE SHEET
2	0002	INDEX OF DRAWINGS AND PLOT PLAN
3	E101	ELECTRICAL SYMBOLS AND NOTES
4	E201	ELECTRICAL PLAN - PARKING LEVEL 1
5	E201	ELECTRICAL PLAN - PARKING LEVEL 2
6	E201	ELECTRICAL PLAN - PARKING LEVEL 3
7	E201	ELECTRICAL PLAN - 1ST FLOOR
8	E201	ELECTRICAL PLAN - 2ND FLOOR
9	E201	ELECTRICAL PLAN - 3RD FLOOR
10	E201	ELECTRICAL PLAN - 4TH FLOOR
11	E201	ELECTRICAL PLAN - ROOF
12	E301	ONE-LINE DIAGRAM 1
13	E302	ONE-LINE DIAGRAM 2

PROJECT DESCRIPTION:

INSTALLATION OF SURGE PROTECTION DEVICES ON THE ELECTRICAL SYSTEM.
 INSTALLATION OF A POWER CONDITIONER ON THE 3RD ELEVATOR BANK.
 REVISION OF ELECTRICAL CIRCUITING FOR GATE CONTROLS TO OPERATE DURING ELECTRICAL OUTAGES.
 NO EXTERIOR WORK.



[CAD PLOT PLAN]



1 PLOT PLAN
0002 SCALE: 1"=___'

REVISION NO.	SYM.	DESCRIPTION	SHT. OF	DATE	APPROVED; PUBLIC WORKS ADMINISTRATOR

RYAN S. KARAMA
 LICENSED PROFESSIONAL ENGINEER
 No. 13987-E
 HAWAII, U.S.A.

DEPT. OF ACCOUNTING & GENERAL SERVICES
 PUBLIC WORKS DIVISION
 STATE OF HAWAII

HOAPILI HALE
 POWER QUALITY SYSTEM IMPROVEMENTS

2145 MAIN STREET, WAILUKU, HAWAII, 96793
 TAX MAP KEY: 3-4-013:013
 WAILUKU MAUI HAWAII

INDEX OF DRAWINGS AND PLOT PLAN

RONALD N.S. HO & ASSOC., INC.		DACS JOB NO.	DRAWING NO.
DESIGNED BY: RK	CHECKED BY: RK	-	0002
DRAWN BY: CAD	APPROVED BY: RK	DATE	SHEET
SCALE: AS SHOWN		OF	SHTS

THIS WORK WAS PREPARED BY ME OR UNDER MY SUPERVISION AND CONSTRUCTION OF THIS PROJECT WILL BE UNDER MY OBSERVATION.

4-30-26
 EXP. DATE

GENERAL CONSTRUCTION NOTES:

- VISIT SITE AND BECOME FAMILIAR WITH EXISTING CONDITIONS, AND EXTENT OF DEMOLITION AND NEW WORK PRIOR TO START OF WORK. RESOLVE ALL DISCREPANCIES AND QUESTIONS PRIOR TO THE START OF WORK.
- REPORT ANY DISCREPANCIES AND/OR DIFFERENCES IN DRAWINGS, IN RESPECT TO EXISTING CONDITIONS, TO THE CITY.
- RESOLVE ALL DISCREPANCIES AND QUESTIONS PRIOR TO THE START OF WORK. NO EXTRA PAYMENT SHALL BE ALLOWED ON ACCOUNT OF WORK MADE NECESSARY BY FAILURE TO VISIT THE SITE AND/OR FAILURE TO RESOLVE DISCREPANCIES AND QUESTIONS.
- MINIMIZE ALL OUTAGES. SCHEDULE AND OBTAIN APPROVALS, FOR ALL OUTAGES WITH THE OWNER. WORK WILL BE REQUIRED DURING OFF HOURS TO MINIMIZE OUTAGES.
- PATCH, GROUT, AND PAINT ALL OPENINGS EXPOSED BY REMOVAL WORK.
- CORE, PATCH, AND PAINT EXISTING FLOORS AND WALLS AS NECESSARY. PROVIDE FIRE PROOFING SEALS (FIRE STOPS) AT ALL CONDUIT PENETRATIONS IN FLOORS AND WALLS, TO MAINTAIN EXISTING FIRE RATING INTEGRITY OF FLOORS AND WALLS.
- MAINTAIN PORTIONS OF EXISTING FIRE ALARM SYSTEM IN COMPLETE OPERATING CONDITION DURING DEMOLITION AND CONSTRUCTION WORK PER UFC ARTICLE 87 "FIRE SAFETY DURING CONSTRUCTION, ALTERATION OR DEMOLITION OF A BUILDING".
- ALL WORK SHALL CONFORM TO THE LATEST ADOPTED BUILDING CODE.
- CONCEAL ALL RACEWAYS WHEREVER POSSIBLE. ROUTE EXPOSED CONDUITS, AND CONDUITS IN CEILING, AS HIGH AS POSSIBLE.
- MAINTAIN ELECTRICAL CONNECTIONS (POWER, SIGNAL, AND LIGHTING) TO UNAFFECTED AREAS.
- REMOVE ALL TEMPORARY LIGHTS, EQUIPMENT, DEVICES, CIRCUITING, ETC. AFTER TEMPORARY WORK IS NO LONGER REQUIRED.
- TEST ALL EQUIPMENT AND SYSTEMS, AND DEMONSTRATE SYSTEM OPERATION TO THE SATISFACTION OF THE CITY.
- PROVIDE EXPANSION COUPLINGS FOR RACEWAYS LARGER THAN 2" PASSING THROUGH EXPANSION JOINTS.
- PROVIDE SHOP DRAWINGS FOR APPROVAL BY THE ENGINEER.
- CONTRACTOR TO PAY FOR ALL PERMITS REQUIRED.
- CONTRACTOR SHALL PROVIDE PADLOCKS FOR ALL EQUIPMENT AND GATES KEYED PER CITY'S REQUIREMENTS.
- PROVIDE AS-BUILT DRAWINGS.

INTERIOR ELECTRICAL SYMBOLS					
MEASURED FROM FINISHED FLOOR TO:			MOUNTING HEIGHT	SYMBOL	DESCRIPTION
TOP	CTR	BTM			
					ELECTRICAL EQUIPMENT, TYPE AS INDICATED
			72"		ELECTRICAL PANELBOARD OR COMMUNICATION CABINET
					SURGE PROTECTION DEVICE
					ELECTRICAL EQUIPMENT CONNECTION
					JUNCTION BOX, 4"SQ MIN., WALL/CEILING MTD RESPECTIVELY.
					LARGE JUNCTION BOX, SIZE AS NOTED, WALL/CEILING MTD RESPECTIVELY.
					CONDUIT CONCEALED IN CEILING OR WALL, ALL OTHERS SIMILAR
					EXPOSED CONDUIT, ALL OTHERS SIMILAR
					CONDUIT CONCEALED BELOW FINISH FLOOR, IN NEW FLOOR TOPPING, ALL OTHERS SIMILAR
					LIQUID-TIGHT FLEXIBLE METAL CONDUIT AND WIRING
					POWER/LIGHTING CIRCUIT HOMERUN TO PANEL "2A", CIRCUITS 1, 3, 5 INDICATED, OTHERS INDICATED SIMILARLY
					COMM CONDUIT HOMERUN, 3/4" C W/PULLSTRING (TEL INDICATED, DATA SIMILAR)
					CONDUIT STUBOUT.
					PWR/LTG CONDUIT CONCEALED IN WALL OR CEILING, 3 WIRES AND 1 GROUND WIRE INDICATED. NO HASHMARKS DENOTES 2 WIRES AND 1 GROUND WIRE.
					CONDUIT RISER TURNED UP/DOWN RESPECTIVELY.
					NOTE INDICATOR, "NOTE NUMBER 1 REFERENCED", ALL OTHERS SIMILAR

ABBREVIATIONS

AFF	ABOVE FINISHED FLOOR	MTD	MOUNTED
	AMPERES	NO.	NUMBER
BTM	BOTTOM	OFCI	OWNER FURNISHED, CONTRACTOR INSTALLED
BKR	BREAKER	PSI	POUNDS PER SQUARE INCH
BKBD	BACKBOARD	PFB	PROVISIONS FOR FUTURE
CAB	CABINET		CIRCUIT BREAKER
CTR	CENTER	PNL	PANELBOARD
CKT	CIRCUIT	PWR	POWER
C	CONDUIT	SCH	SCHEDULE
D	DEEP	SQ	SQUARE
DIA	DIAMETER	STD	STANDARD
DWG	DRAWING	T	THICK
EQ	EQUAL	TYP	TYPICAL
GND	GROUND	V	VOLTS
HECO	HAWAIIAN ELECTRIC COMPANY	W	WIRE
KAIC	KILOAMPERES INTERRUPTING CAPACITY	WP	WEATHERPROOF
KVA	KILOVOLT AMPERES		
L	LENGTH/LONG		
LTG	LIGHTING		
MAX	MAXIMUM		
	MINIMUM		

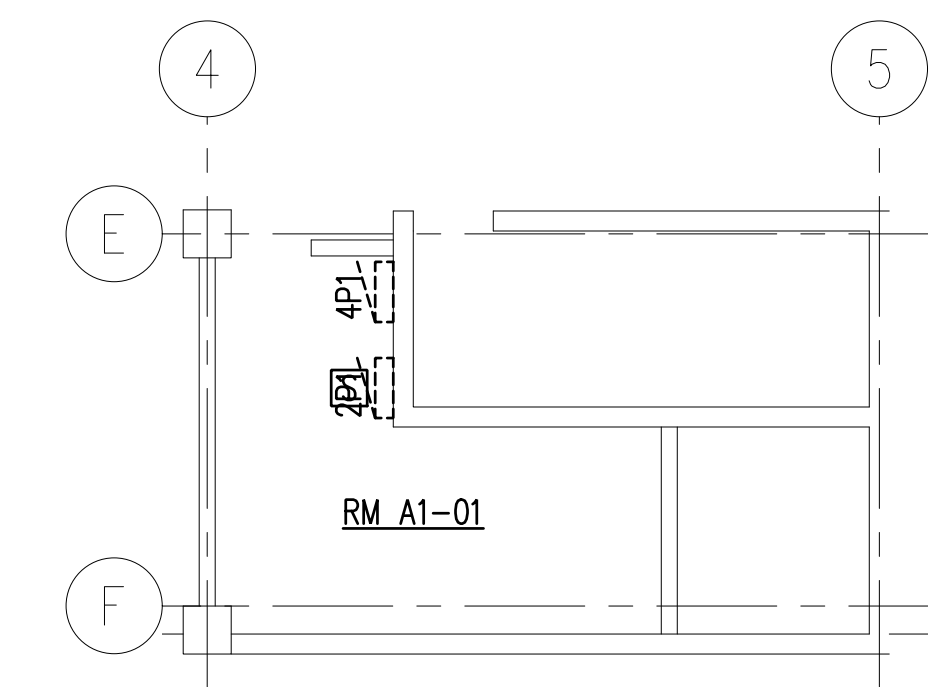
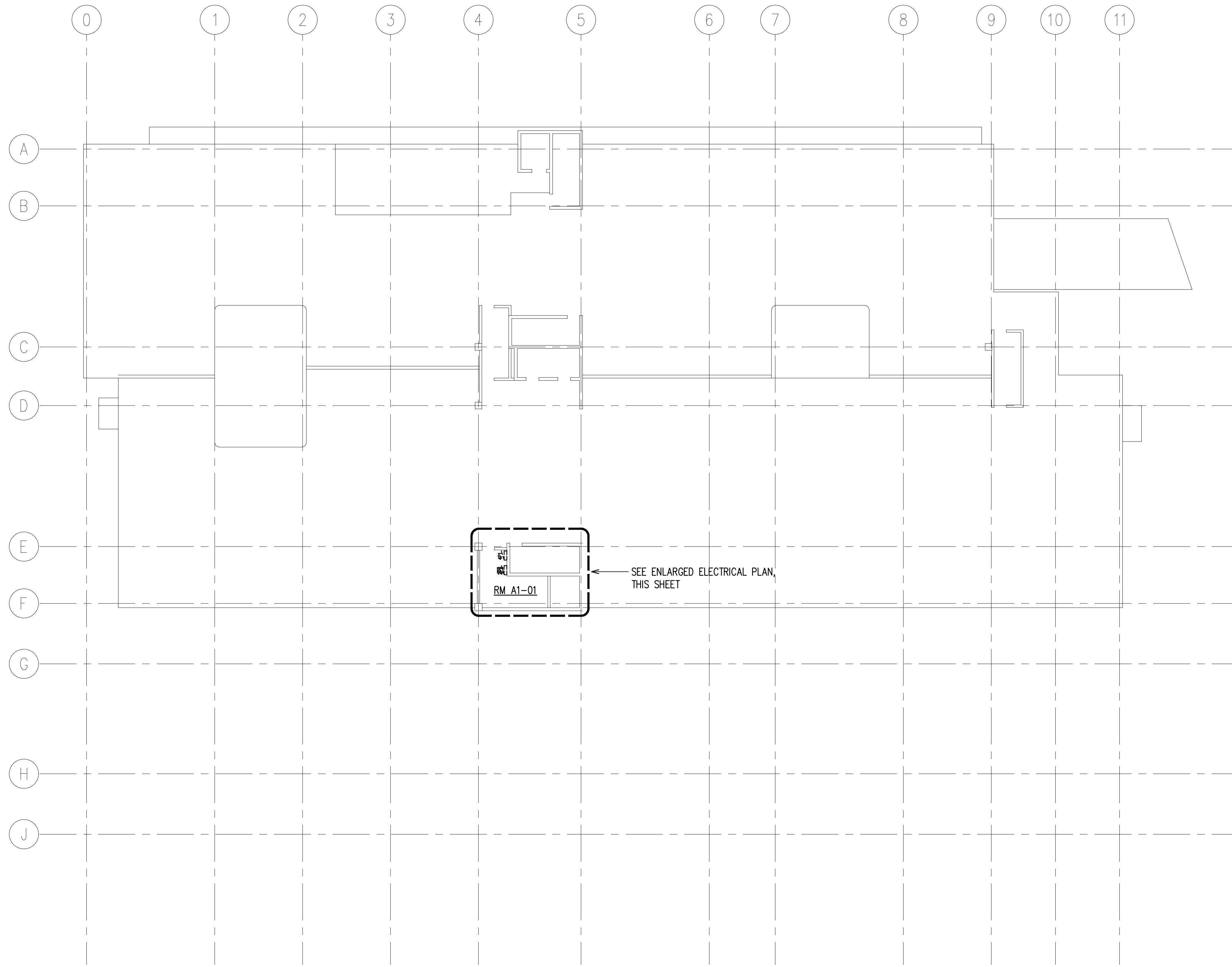
ONE-LINE DIAGRAM SYMBOLS

SYMBOL	DESCRIPTION
	GROUND
	GROUND BUS
	NEUTRAL BUS
	MOLDED CASE CIRCUIT BREAKER
	TRANSFORMER, TYPE AS INDICATED
	SURGE PROTECTION DEVICE
	GROUND FAULT INTERRUPTER
	ARCFLASH REDUCTION MAINTENANCE SWITCH
	SWITCH
	UTILITY METER SOCKET AND METER (METER BY UTILITY)
	POWER METER
	CURRENT TRANSFORMERS, ONE PER PHASE
	KIRKKEY
X	ITEMS WITH "X" THROUGH SYMBOL INDICATES REMOVAL/DEMOLITION OF THAT ITEM

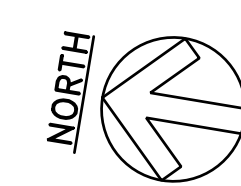
SYMBOL NOTES:

- HASH MARKS ON CONDUIT SYMBOL DENOTE NUMBER OF WIRES IN CONDUIT, NO HASH MARKS INDICATE 2 WIRES PLUS SEPARATE GROUND WIRE. GROUND WIRES NOT INDICATED IN WIRE COUNTS.
- CIRCUITING WITH AN "e" AND DASHED SYMBOLS INDICATE EXISTING ITEMS.
- ITEMS INDICATED WITH AN "X" ARE TO BE DEMOLISHED
- SPECIAL MOUNTING HEIGHTS AS INDICATED ON PLANS.

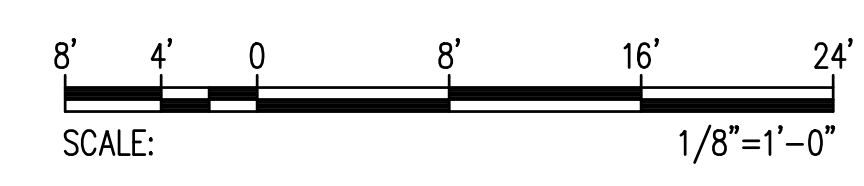
REVISION NO.	SYM.	DESCRIPTION	SHT. OF	DATE	APPROVED; PUBLIC WORKS ADMINISTRATOR
DEPT. OF ACCOUNTING & GENERAL SERVICES PUBLIC WORKS DIVISION STATE OF HAWAII HOAPILI HALE POWER QUALITY SYSTEM IMPROVEMENTS 2145 MAIN STREET, WAILUKU, HAWAII, 96793 TAX MAP KEY: 3-4-013:013 WAILUKU MAUI HAWAII					
ELECTRICAL SYMBOLS AND NOTES					
			RONALD N.S. HO & ASSOC., INC. DESIGNED BY: RK DRAWN BY: CAD SCALE: AS SHOWN		DACS JOB NO. - DATE SHEET E101 OF SHITS
THIS WORK WAS PREPARED BY ME OR UNDER MY SUPERVISION AND CONSTRUCTION OF THIS PROJECT WILL BE UNDER MY OBSERVATION. 4-30-26 EXP. DATE					



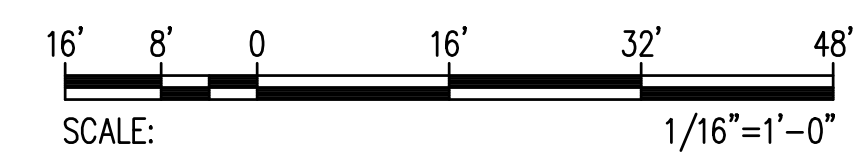
ENLARGED ELECTRICAL PLAN - RM 1A-01
SCALE: 1/8"=1'-0"



ELECTRICAL PLAN - PARKING LEVEL 1
SCALE: 1/16"=1'-0"



GRAPHIC SCALE

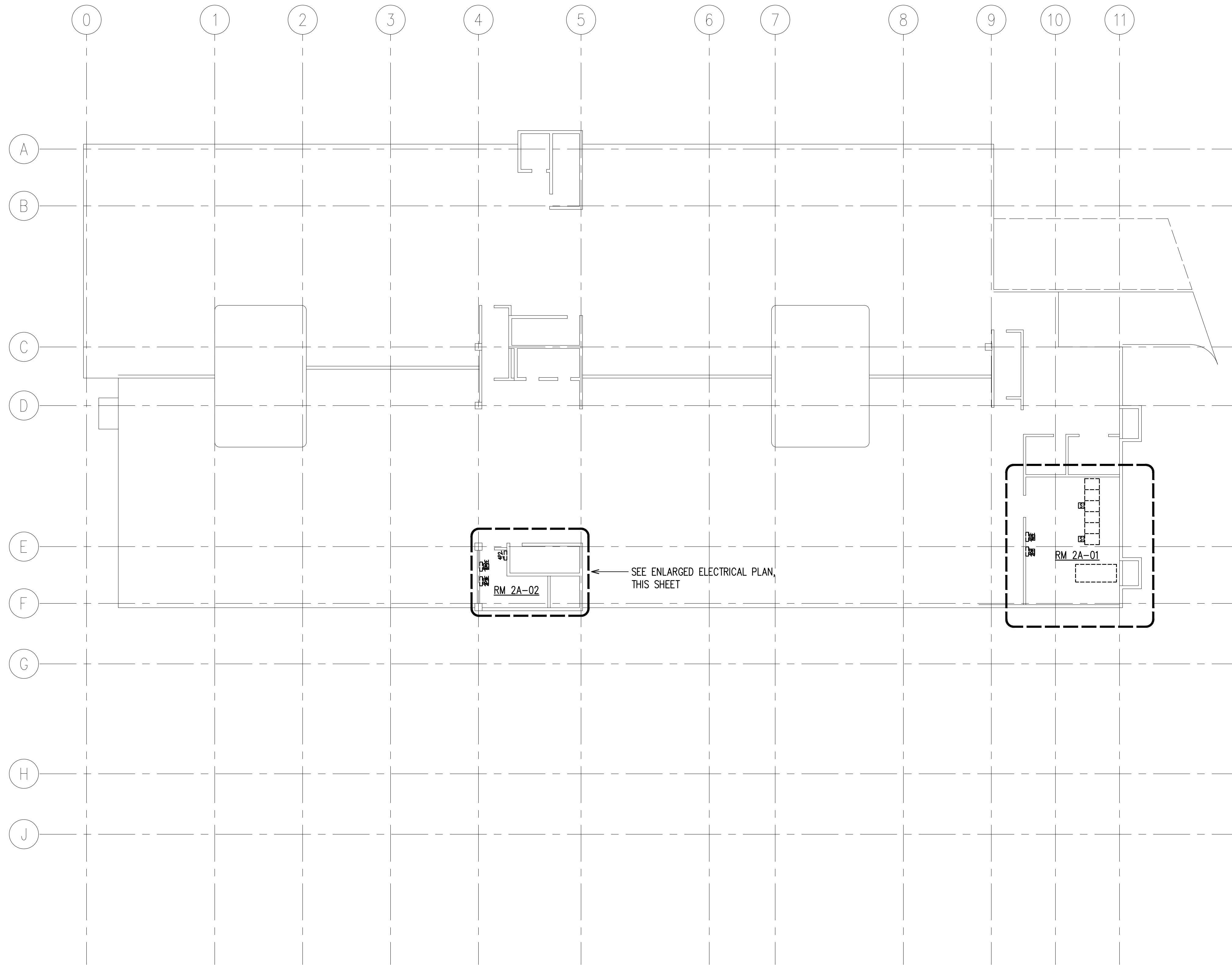


GRAPHIC SCALE

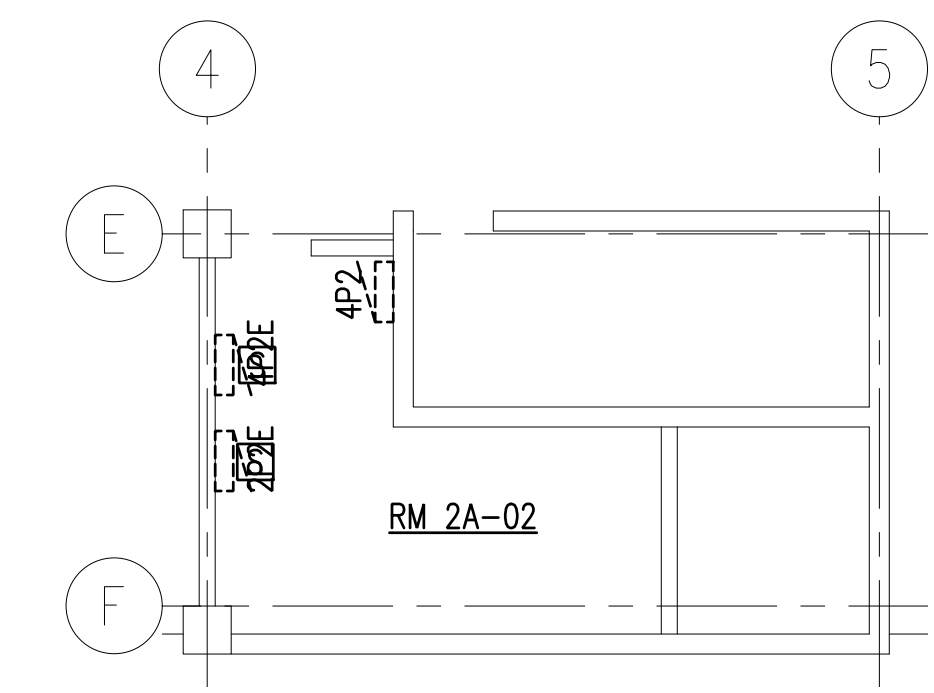
REVISION NO.	SYM.	DESCRIPTION	SHT. OF	DATE	APPROVED: PUBLIC WORKS ADMINISTRATOR

DEPT. OF ACCOUNTING & GENERAL SERVICES PUBLIC WORKS DIVISION STATE OF HAWAII			
HOAPILI HALE POWER QUALITY SYSTEM IMPROVEMENTS			
2145 MAIN STREET, WAILUKU, HAWAII, 96793 TAX MAP KEY: 3-4-013:013 WAILUKU MAUI HAWAII			
ELECTRICAL PLAN - PARKING LEVEL 1			
RONALD N.S. HO & ASSOC., INC. LICENSED PROFESSIONAL ENGINEER No. 13987-E HAWAII, U.S.A.		DACS JOB NO. -	
DESIGNED BY: RK	CHECKED BY: RK	DATE	DRAWING NO. E201
DRAWN BY: CAD	APPROVED BY: RK	DATE	SHEET OF
4-30-26 EXP. DATE		SCALE: AS SHOWN	
FILE DRAWER FOLDER			

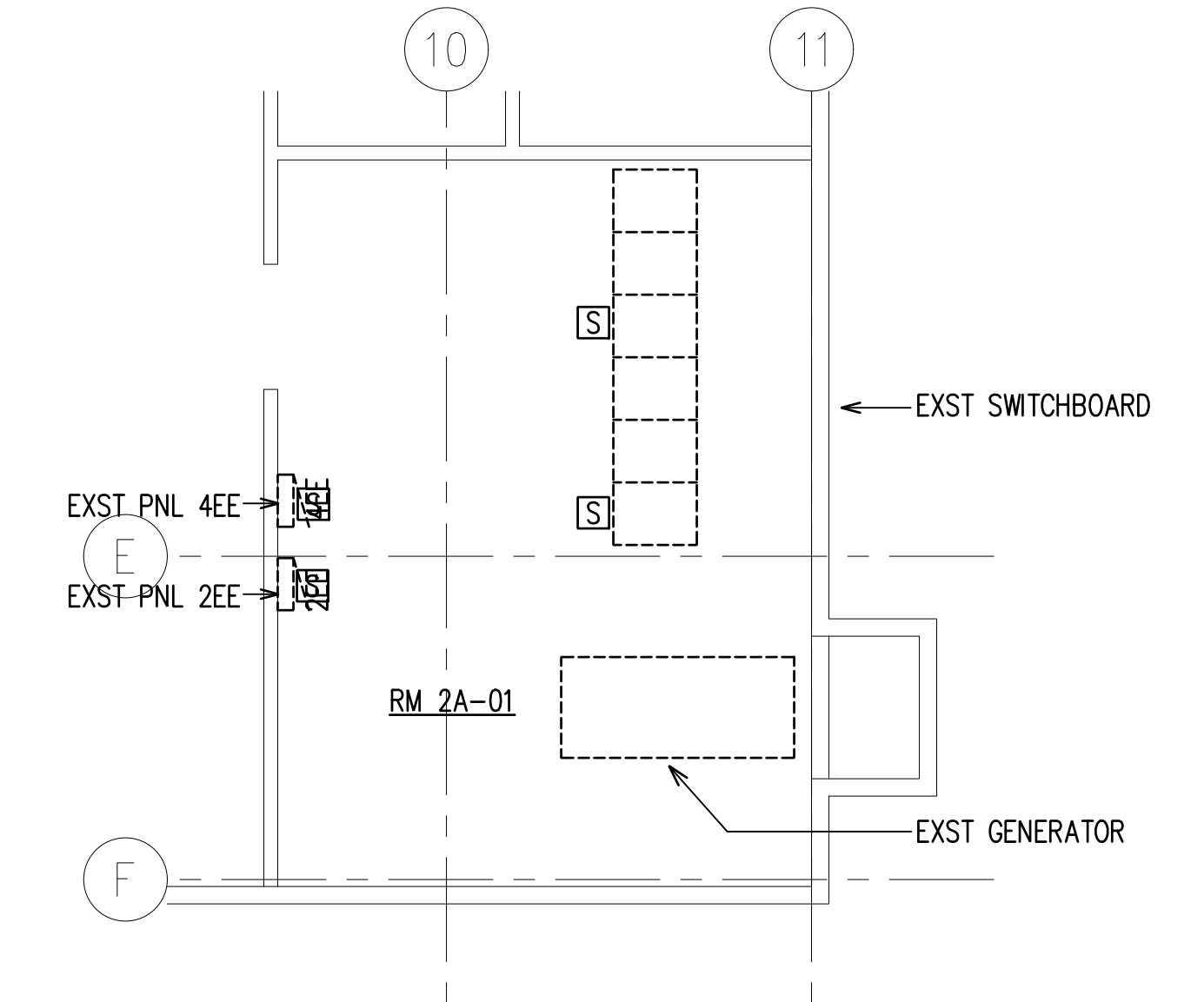
Z:\Acad\projects\224177B\E201_224177B_P3_Level.dwg



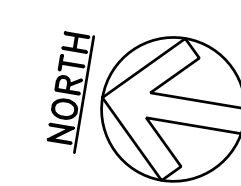
SEE ENLARGED ELECTRICAL PLAN,
THIS SHEET



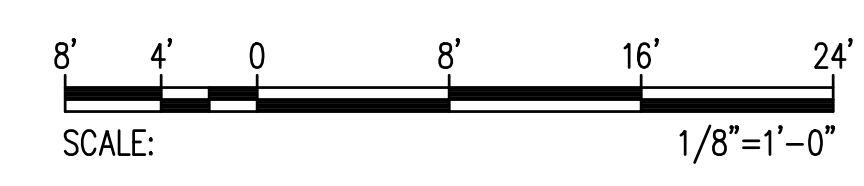
ENLARGED ELECTRICAL PLAN - RM 2A-02
SCALE: 1/8"=1'-0"



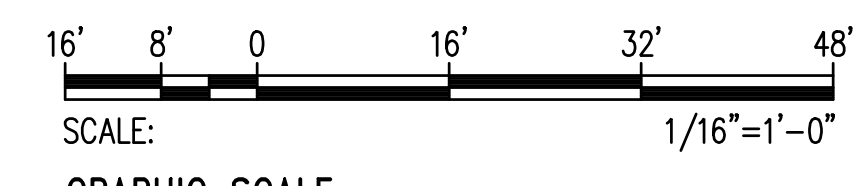
ENLARGED ELECTRICAL PLAN - RM 2A-01
SCALE: 1/8"=1'-0"



ELECTRICAL PLAN - PARKING LEVEL 2
SCALE: 1/16"=1'-0"



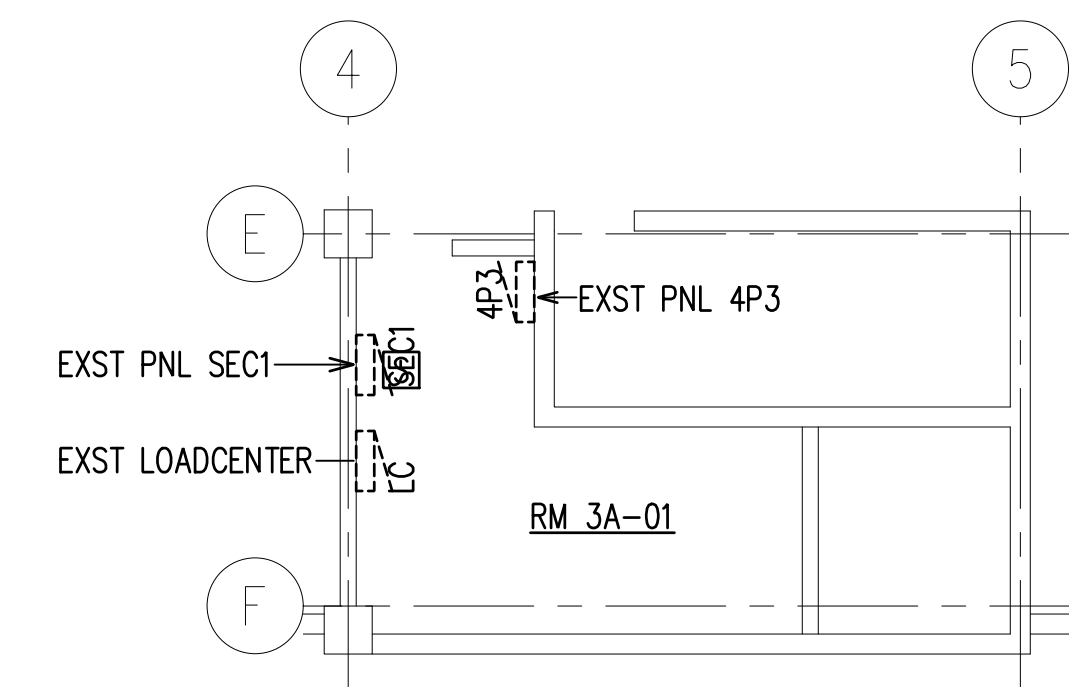
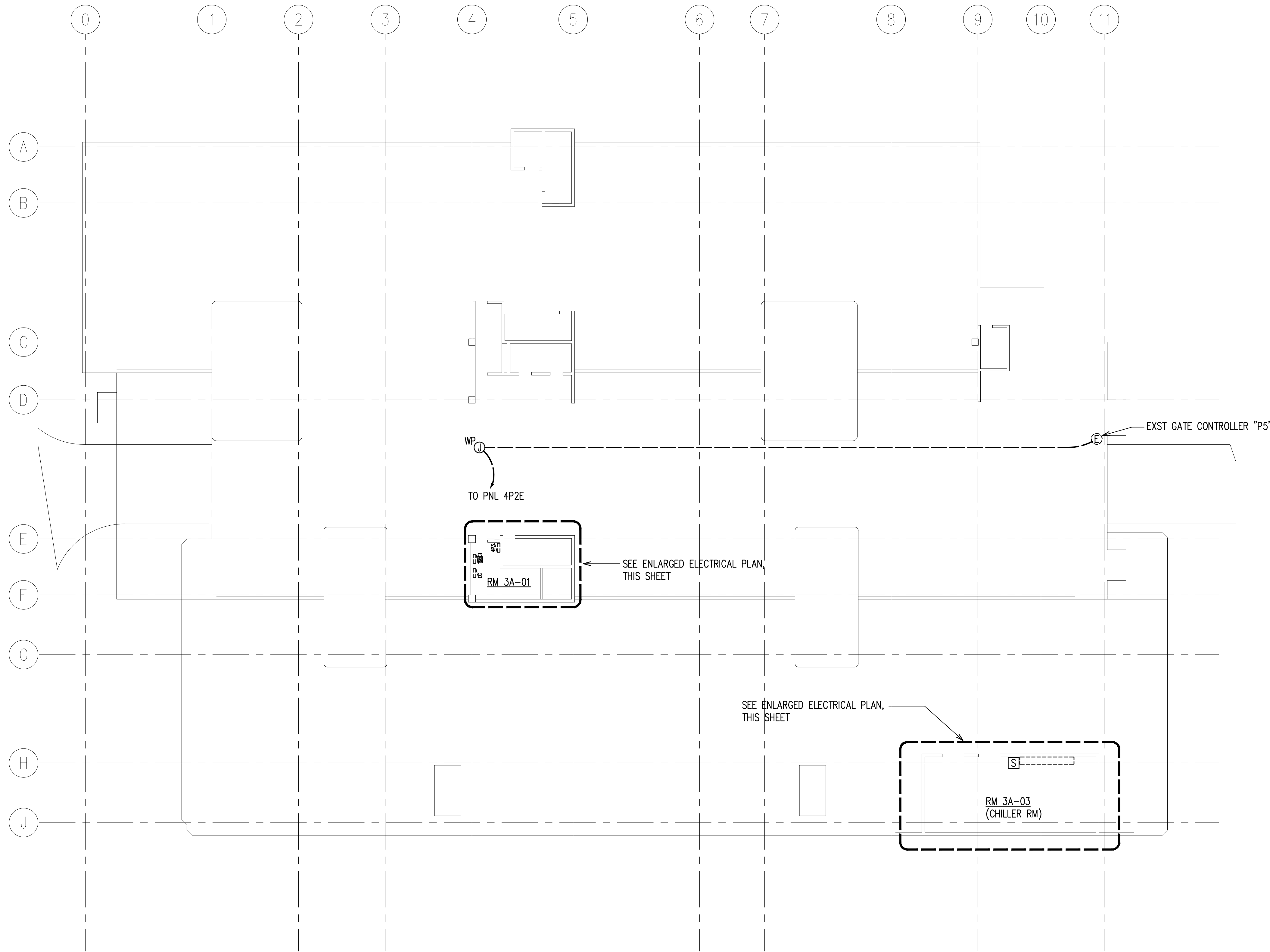
GRAPHIC SCALE



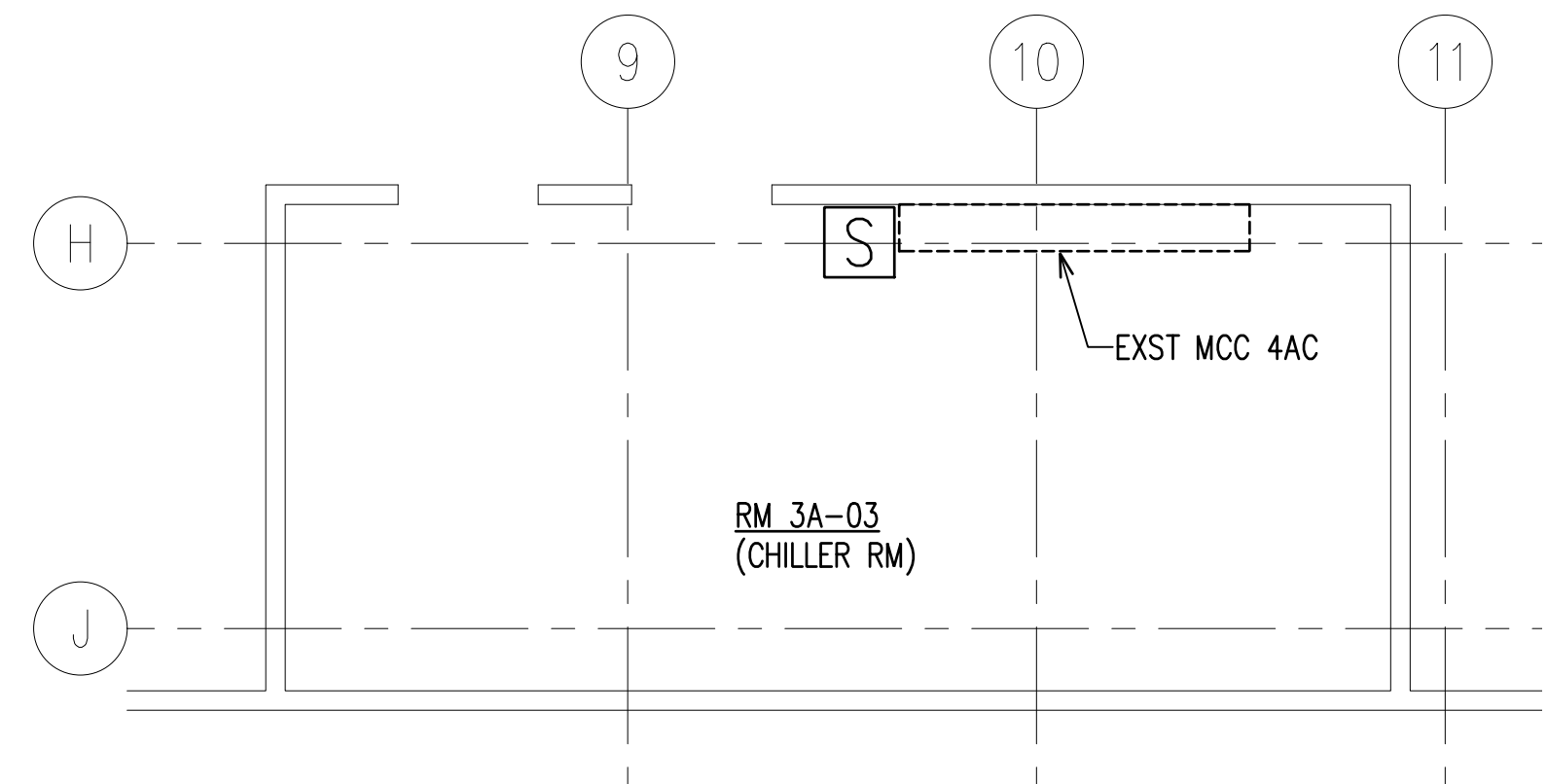
GRAPHIC SCALE

REVISION NO.	SYM.	DESCRIPTION	SHT. OF	DATE	APPROVED; PUBLIC WORKS ADMINISTRATOR
DEPT. OF ACCOUNTING & GENERAL SERVICES PUBLIC WORKS DIVISION STATE OF HAWAII HOAPILI HALE POWER QUALITY SYSTEM IMPROVEMENTS 2145 MAIN STREET, WAILUKU, HAWAII, 96793 WAILUKU TAX MAP KEY: 3-4-013:013 MAUI HAWAII ELECTRICAL PLAN - PARKING LEVEL 2					
RONALD N.S. HO & ASSOC., INC. DESIGNED BY: RK CHECKED BY: RK DRAWN BY: CAD APPROVED BY: RK SCALE: AS SHOWN				DACS JOB NO. -	DRAWING NO. E202 SHEET OF SHITS
THIS WORK WAS PREPARED BY ME OR UNDER MY SUPERVISION AND CONSTRUCTION OF THIS PROJECT WILL BE UNDER MY OBSERVATION. 4-30-26 EXP. DATE					

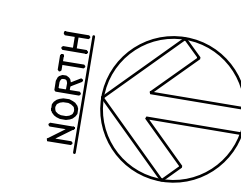
Z:\Acad\Projects\224177B\E202_224177B_P2_Level.dwg



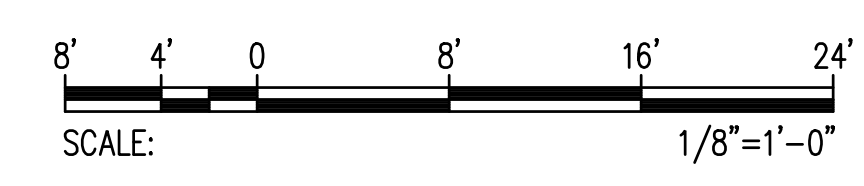
ENLARGED ELECTRICAL PLAN - RM 3A-01
SCALE: 1/8"=1'-0"



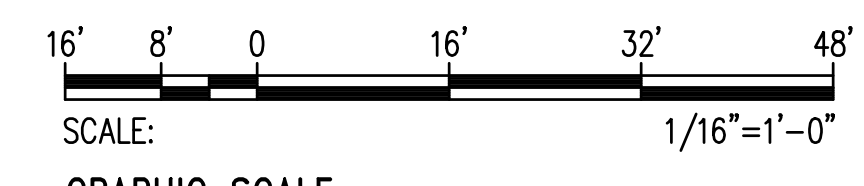
ENLARGED ELECTRICAL PLAN - RM 3A-03
SCALE: 1/8"=1'-0"



ELECTRICAL PLAN - PARKING LEVEL 3
SCALE: 1/16"=1'-0"



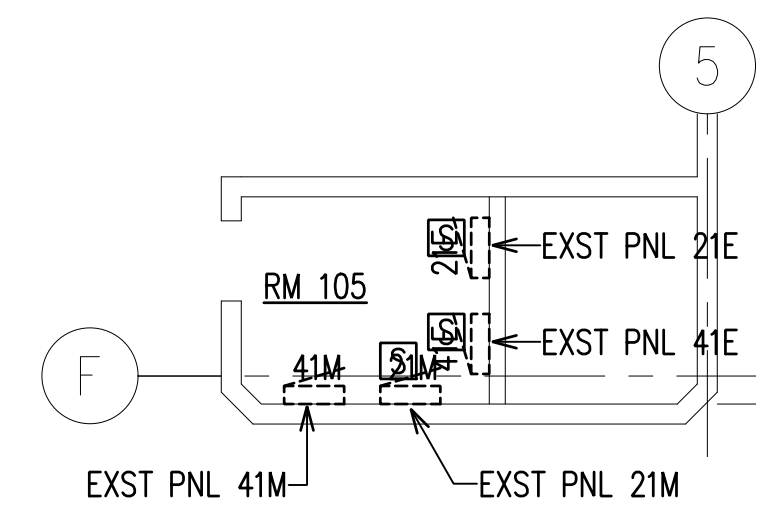
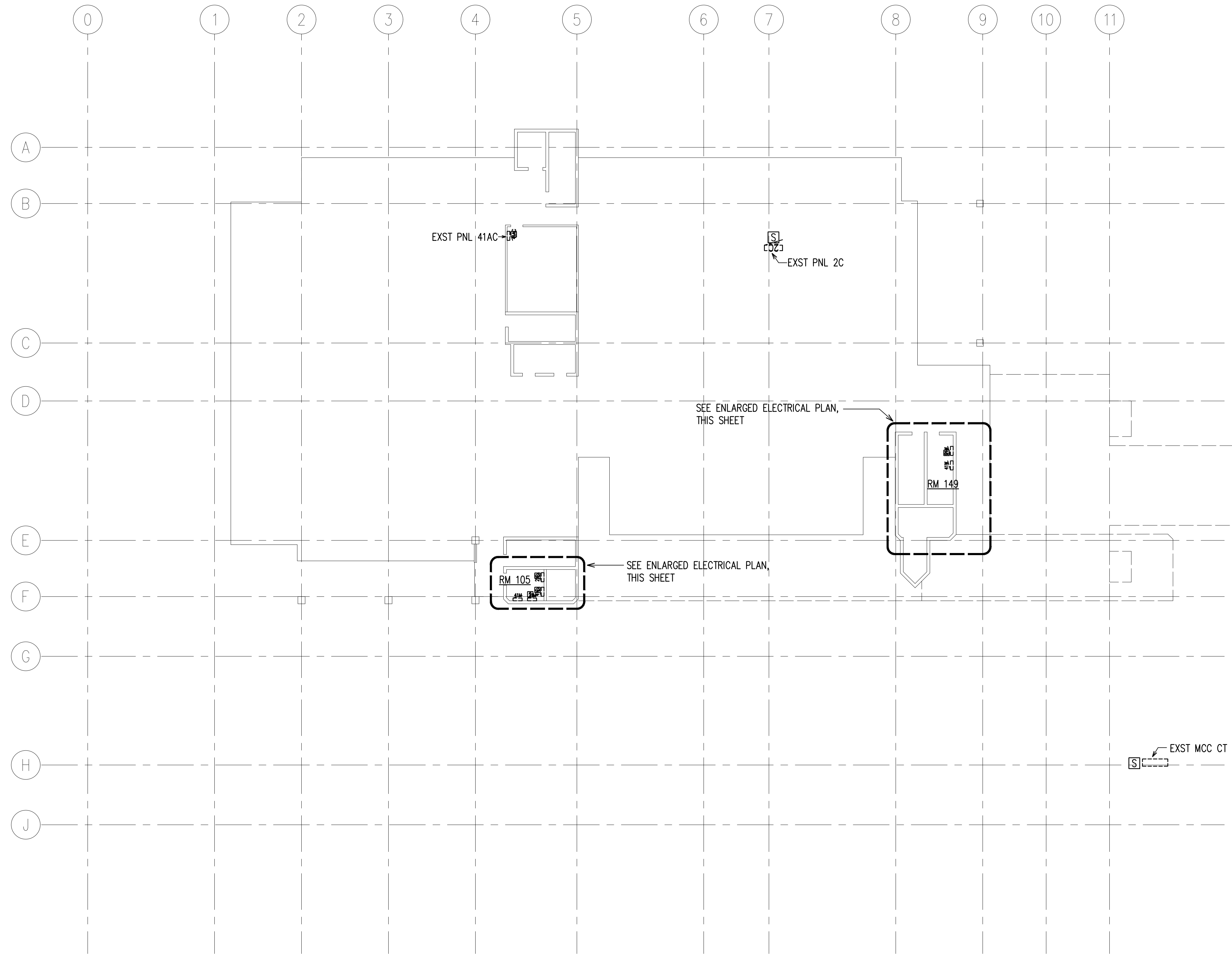
GRAPHIC SCALE



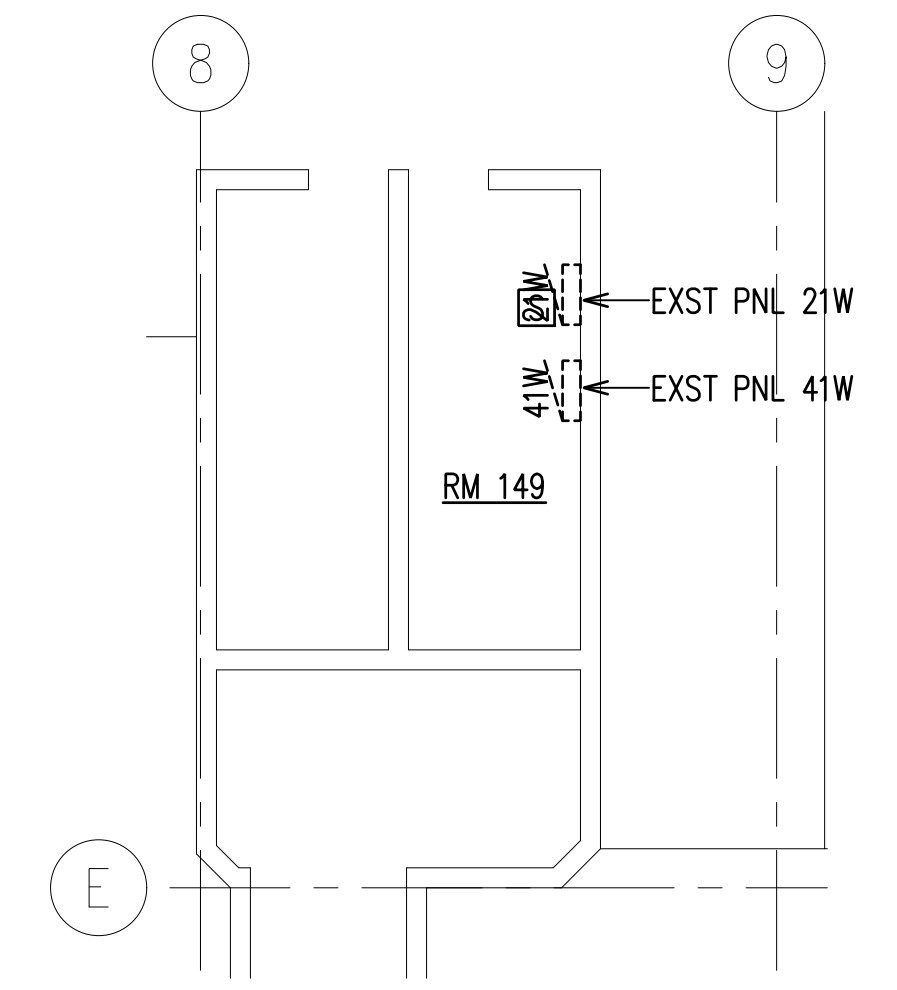
GRAPHIC SCALE

REVISION NO.	SYM.	DESCRIPTION	SHT. OF	DATE	APPROVED: PUBLIC WORKS ADMINISTRATOR
DEPT. OF ACCOUNTING & GENERAL SERVICES STATE OF HAWAII HOAPILI HALE POWER QUALITY SYSTEM IMPROVEMENTS 2145 MAIN STREET, WAILUKU, HAWAII, 96793 WAILUKU TAX MAP KEY: 3-4-013:013 MAUI HAWAII ELECTRICAL PLAN - PARKING LEVEL 3					
RONALD N.S. HO & ASSOC., INC. LICENSED PROFESSIONAL ENGINEER No. 13987-E HAWAII, U.S.A.				DACS JOB NO. -	DRAWING NO. E203
DESIGNED BY: RK	CHECKED BY: RK	DATE	SHEET		
DRAWN BY: CAD	APPROVED BY: RK	DATE	SHEET		
4-30-26 EXP. DATE	SCALE: AS SHOWN	DATE	OF SHITS		
FILE DRAWER FOLDER					

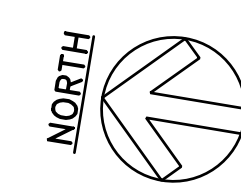
Z:\Acad\projects\224177B\E203_224177B_P1_Level.dwg



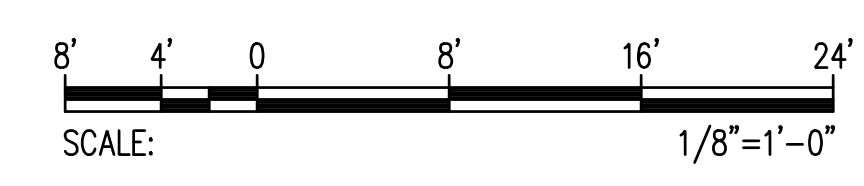
ENLARGED ELECTRICAL PLAN - RM 105
SCALE: 1/8"=1'-0"



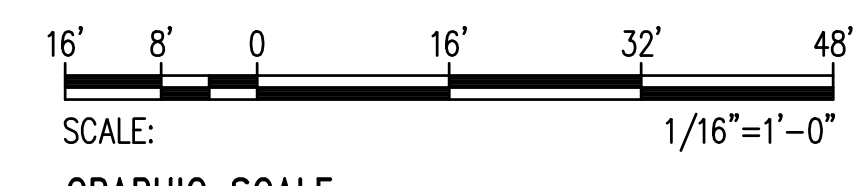
ENLARGED ELECTRICAL PLAN - RM 149
SCALE: 1/8"=1'-0"



ELECTRICAL PLAN - 1ST FLOOR
SCALE: 1/16"=1'-0"



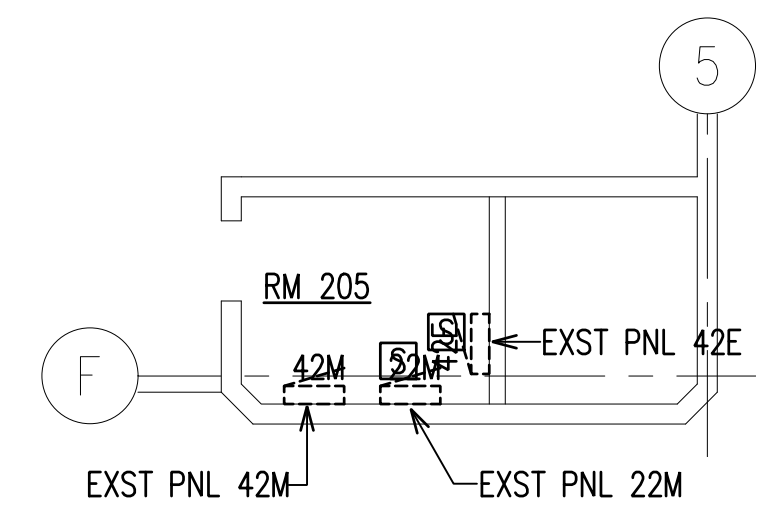
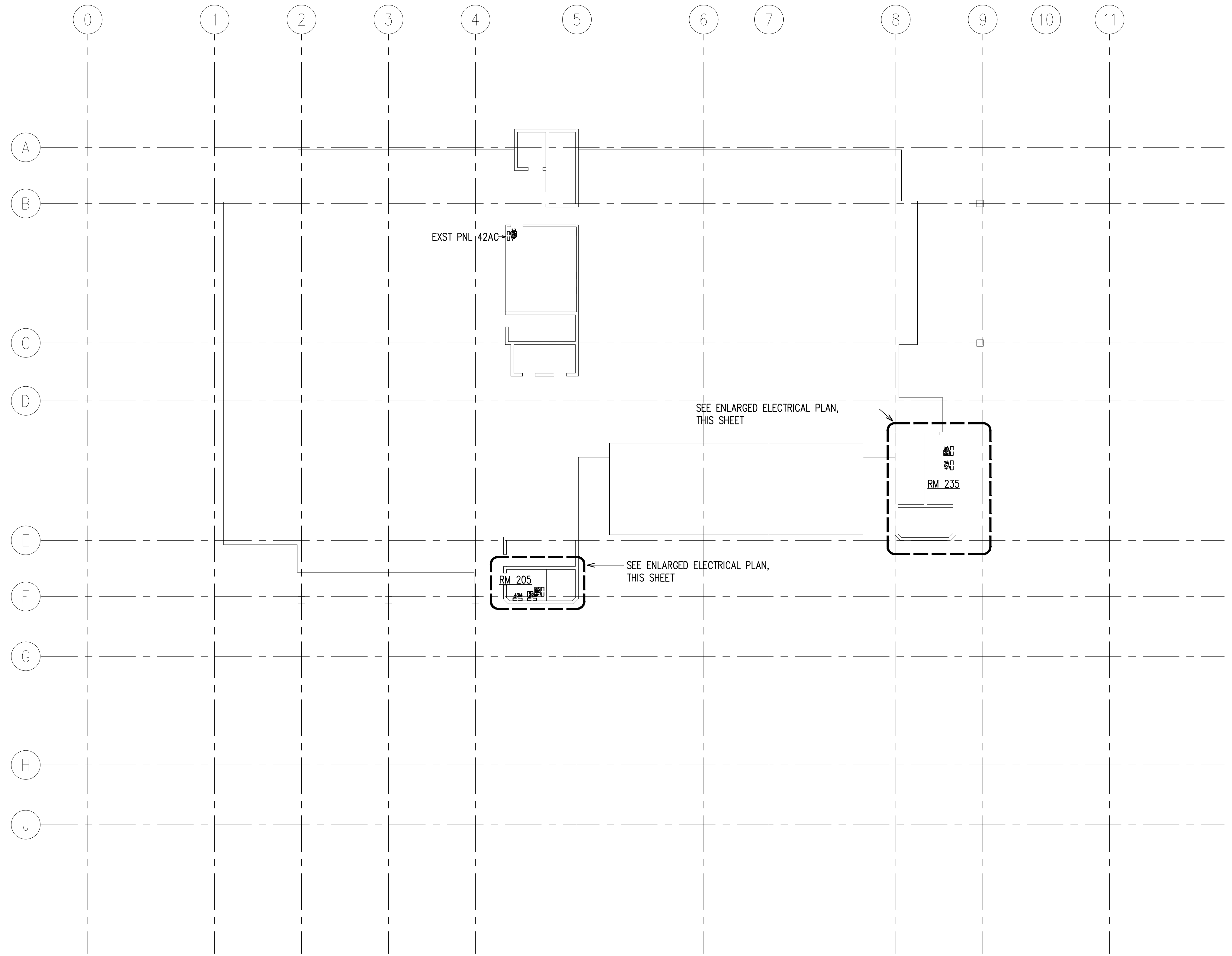
GRAPHIC SCALE



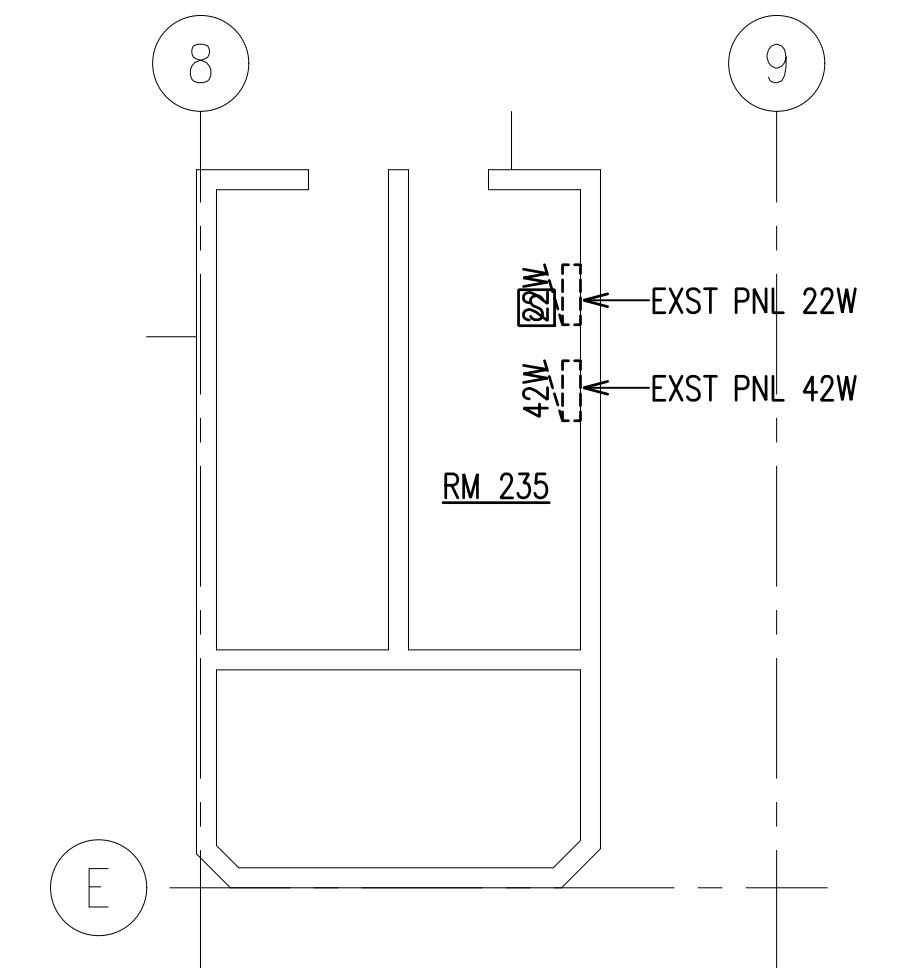
GRAPHIC SCALE

REVISION NO.	SYM.	DESCRIPTION	SHT. OF	DATE	APPROVED: PUBLIC WORKS ADMINISTRATOR
DEPT. OF ACCOUNTING & GENERAL SERVICES PUBLIC WORKS DIVISION STATE OF HAWAII HOAPILI HALE POWER QUALITY SYSTEM IMPROVEMENTS 2145 MAIN STREET, WAILUKU, HAWAII, 96793 WAILUKU TAX MAP KEY: 3-4-013:013 MAUI HAWAII ELECTRICAL PLAN - 1ST FLOOR					
RONALD N.S. HO & ASSOC., INC. DESIGNED BY: RK DRAWN BY: CAD 4-30-26 EXP. DATE			DACS JOB NO. -		DRAWING NO. E204 SHEET OF SHITS
LICENSED PROFESSIONAL ENGINEER No. 13987-E HAWAII, U.S.A. THIS WORK WAS PREPARED BY ME OR UNDER MY SUPERVISION AND CONSTRUCTION OF THIS PROJECT WILL BE UNDER MY OBSERVATION.			SCALE: AS SHOWN		

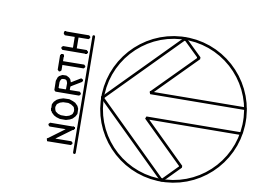
Z:\Acad\projects\224177B\E204_224177B_1st_flr.dwg



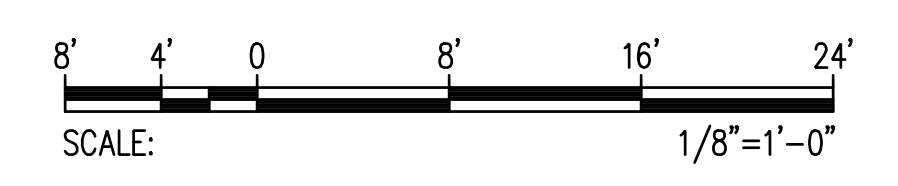
ENLARGED ELECTRICAL PLAN - RM 205
SCALE: 1/8"=1'-0"



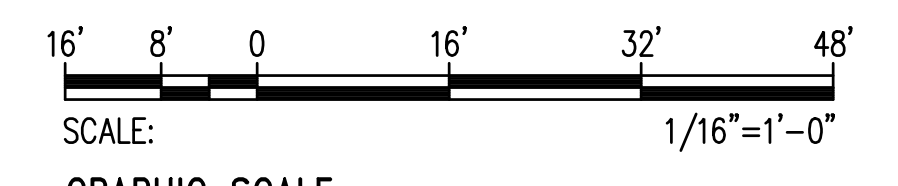
ENLARGED ELECTRICAL PLAN - RM 235
SCALE: 1/8"=1'-0"



ELECTRICAL PLAN - 2ND FLOOR
SCALE: 1/16"=1'-0"

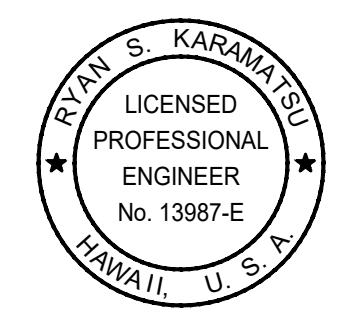


GRAPHIC SCALE



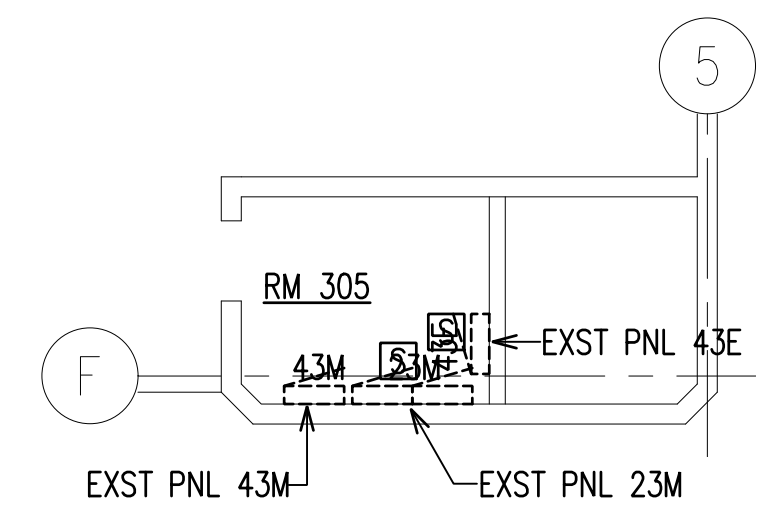
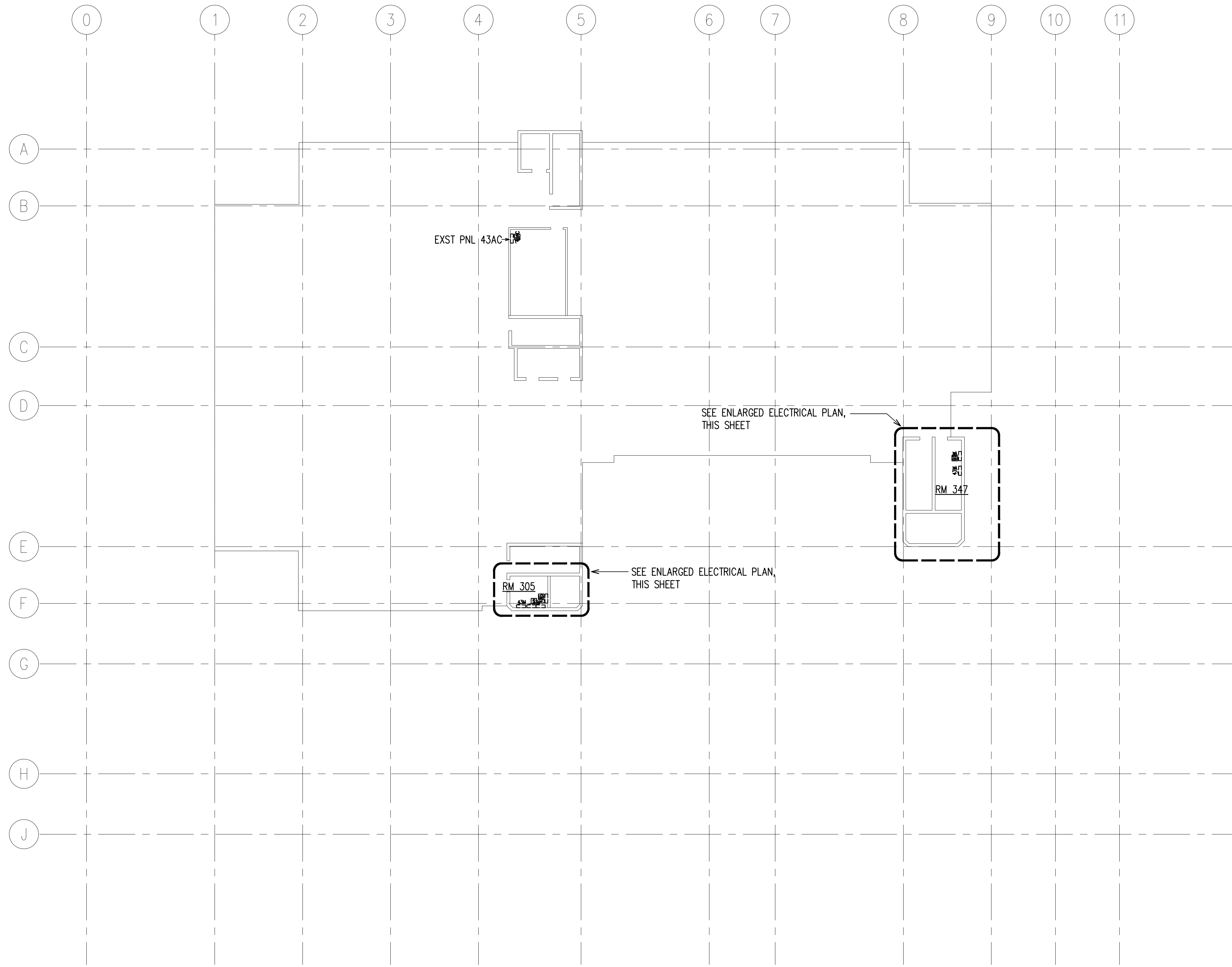
GRAPHIC SCALE

REVISION NO.	SYM.	DESCRIPTION	SHT. OF	DATE	APPROVED; PUBLIC WORKS ADMINISTRATOR
DEPT. OF ACCOUNTING & GENERAL SERVICES PUBLIC WORKS DIVISION STATE OF HAWAII HOAPILI HALE POWER QUALITY SYSTEM IMPROVEMENTS 2145 MAIN STREET, WAILUKU, HAWAII, 96793 WAILUKU TAX MAP KEY: 3-4-013:013 MAUI HAWAII ELECTRICAL PLAN - 2ND FLOOR					
RONALD N.S. HO & ASSOC., INC. DESIGNED BY: RK DRAWN BY: CAD 4-30-26 EXP. DATE			DACS JOB NO. -		DRAWING NO. E205 SHEET OF SHITS
SCALE: AS SHOWN					

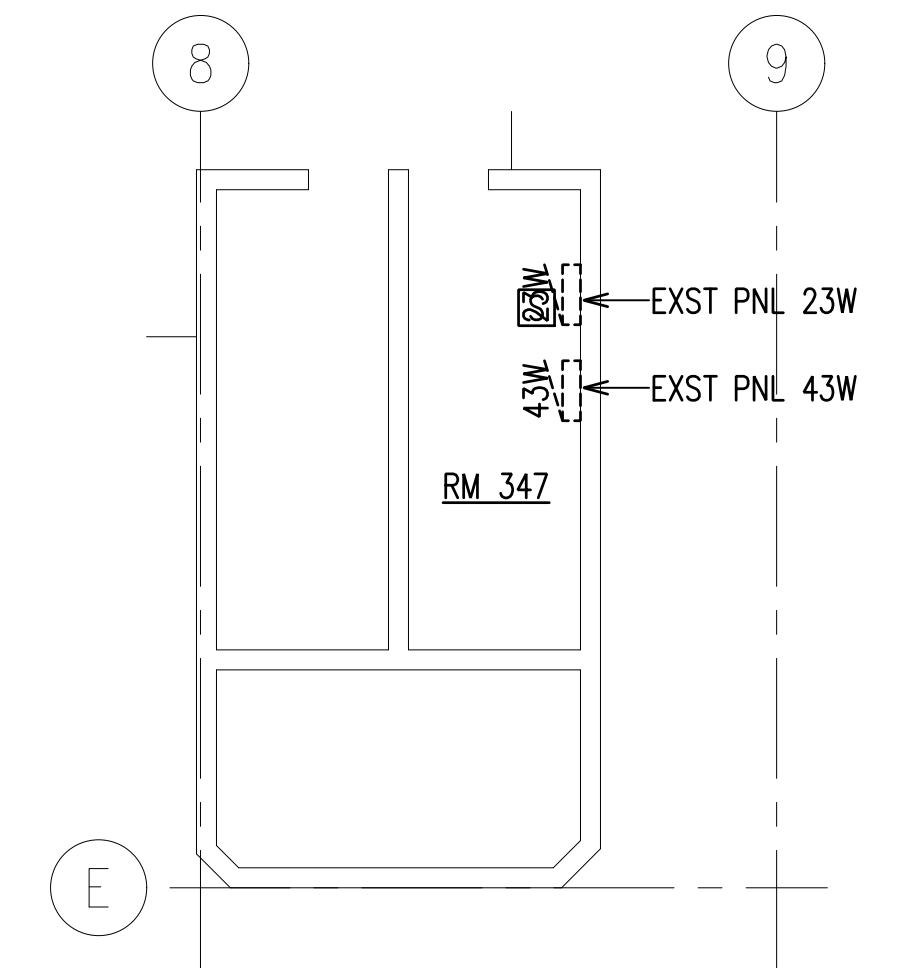


THIS WORK WAS PREPARED BY ME OR UNDER MY SUPERVISION AND CONSTRUCTION OF THIS PROJECT WILL BE UNDER MY OBSERVATION.

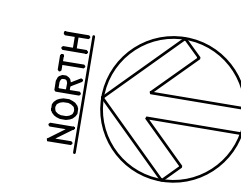
Z:\Acad\projects\224177B\E205_224177B_2nd_fir.dwg



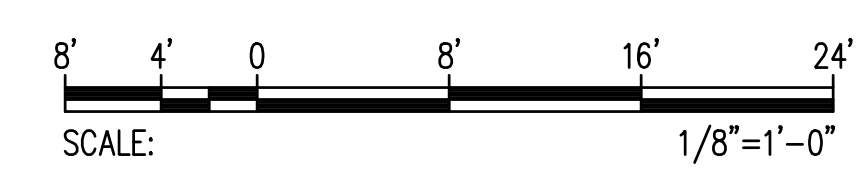
ENLARGED ELECTRICAL PLAN - RM 305
SCALE: 1/8"=1'-0"



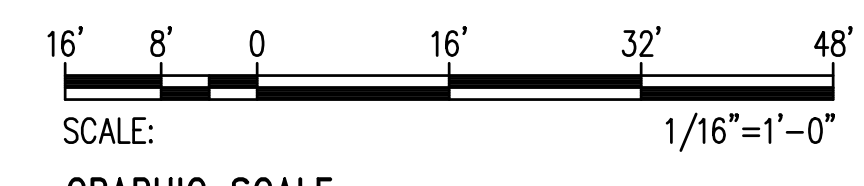
ENLARGED ELECTRICAL PLAN - RM 347
SCALE: 1/8"=1'-0"



ELECTRICAL PLAN - 3RD FLOOR
SCALE: 1/16"=1'-0"



GRAPHIC SCALE

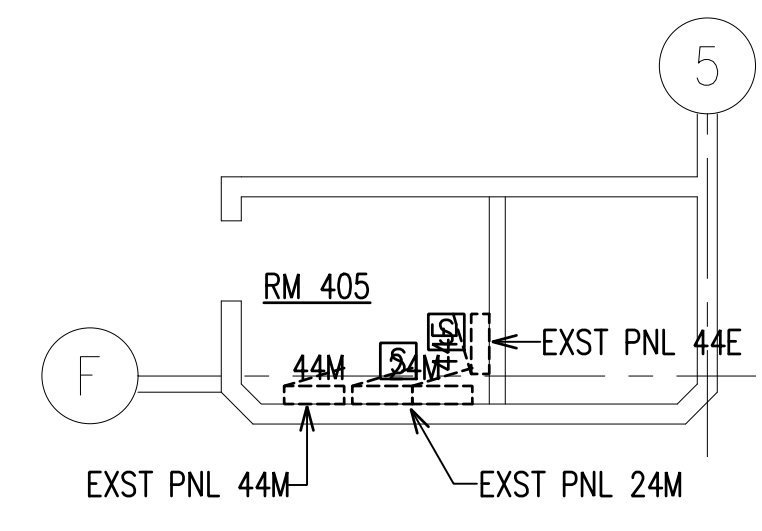
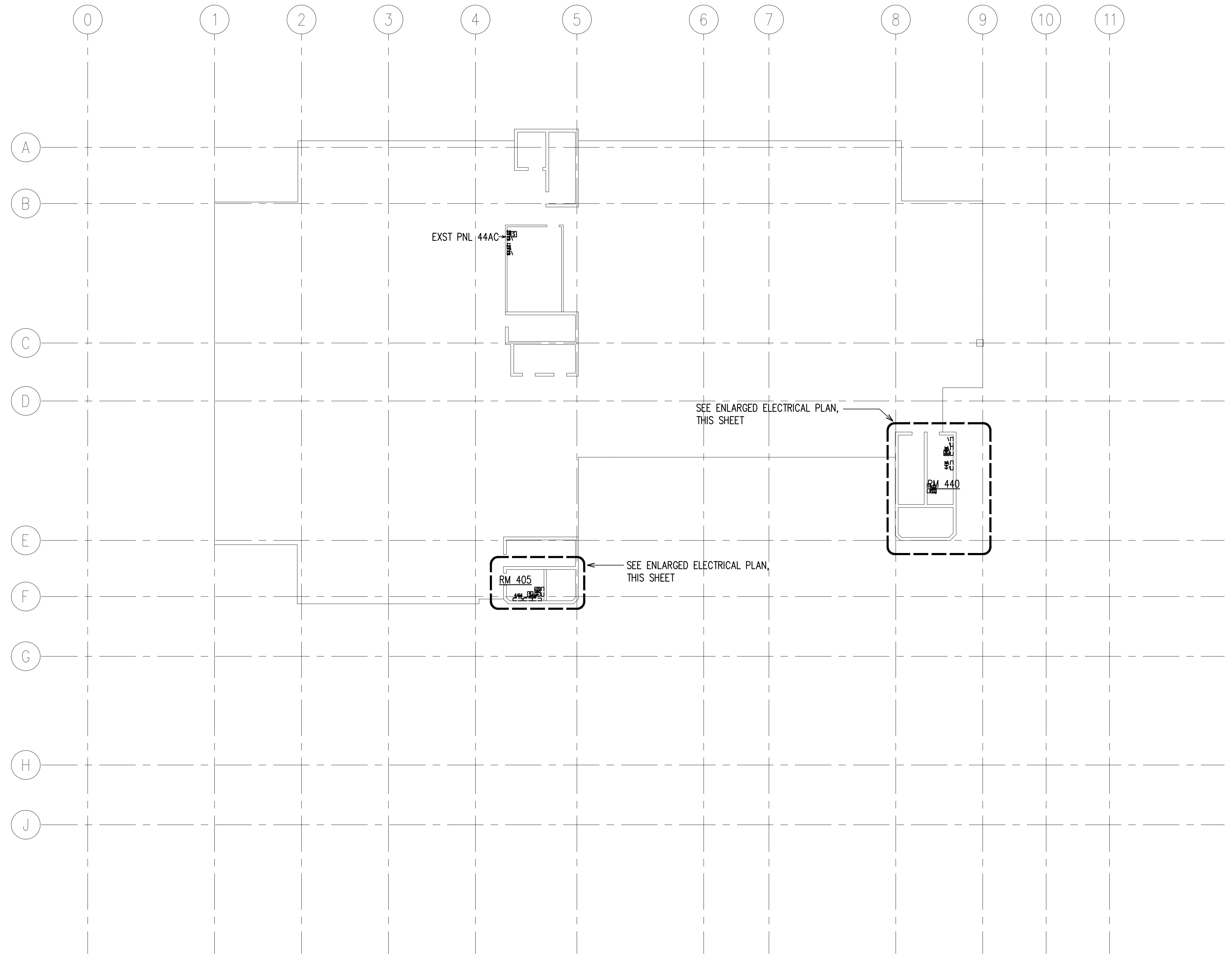


GRAPHIC SCALE

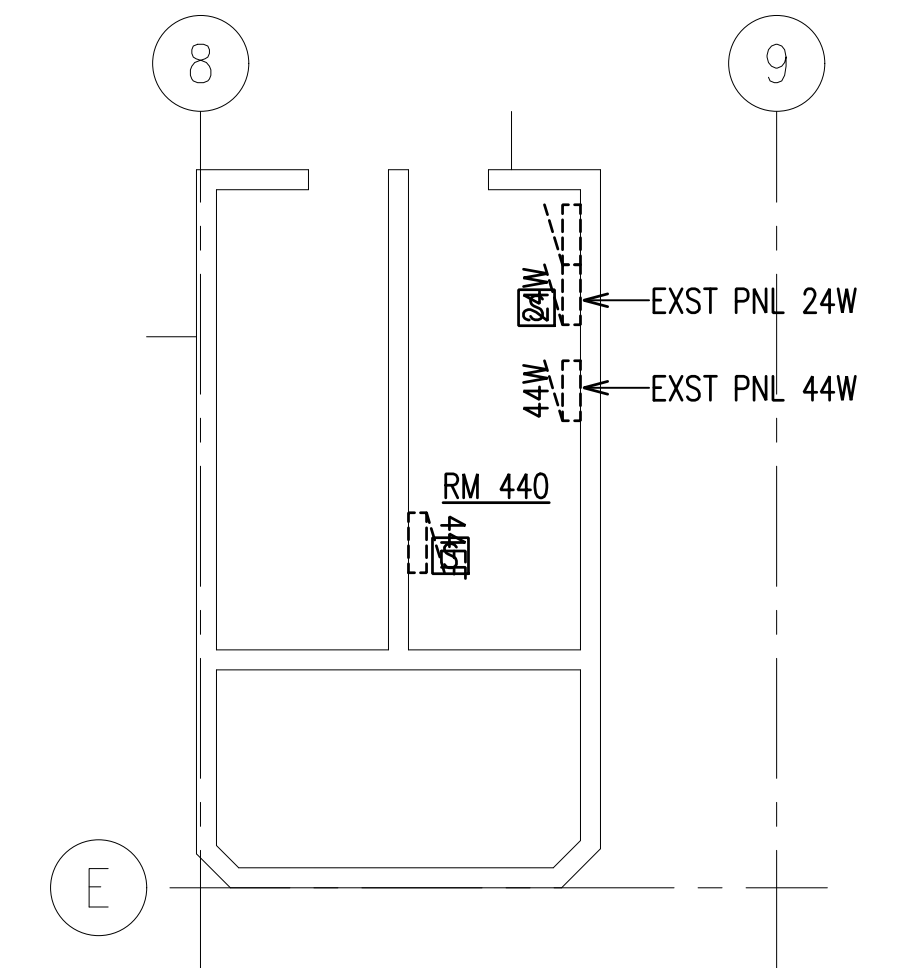
REVISION NO.	SYM.	DESCRIPTION	SHT. OF	DATE	APPROVED; PUBLIC WORKS ADMINISTRATOR

DEPT. OF ACCOUNTING & GENERAL SERVICES PUBLIC WORKS DIVISION STATE OF HAWAII HOAPILI HALE POWER QUALITY SYSTEM IMPROVEMENTS 2145 MAIN STREET, WAILUKU, HAWAII, 96793 WAILUKU TAX MAP KEY: 3-4-013:013 MAUI HAWAII ELECTRICAL PLAN - 3RD FLOOR			
		THIS WORK WAS PREPARED BY ME OR UNDER MY SUPERVISION AND CONSTRUCTION OF THIS PROJECT WILL BE UNDER MY OBSERVATION. 4-30-26 EXP. DATE	
RONALD N.S. HO & ASSOC., INC. DESIGNED BY: RK DRAWN BY: CAD		DACS JOB NO. - DRAWING NO. E206 CHECKED BY: RK APPROVED BY: RK DATE SHEET OF SHITS	
SCALE: AS SHOWN		FILE DRAWER FOLDER	

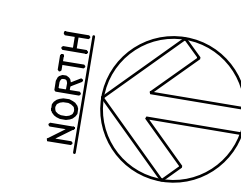
Z:\Acad\projects\224177B\E206_224177B_3rd_flr.dwg



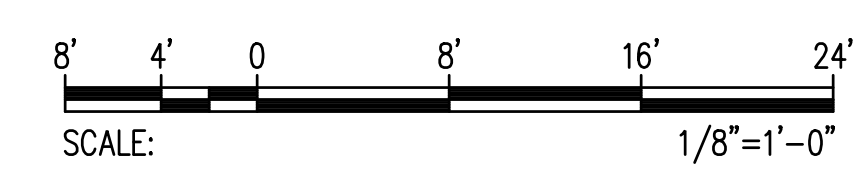
ENLARGED ELECTRICAL PLAN - RM 405
SCALE: 1/8"=1'-0"



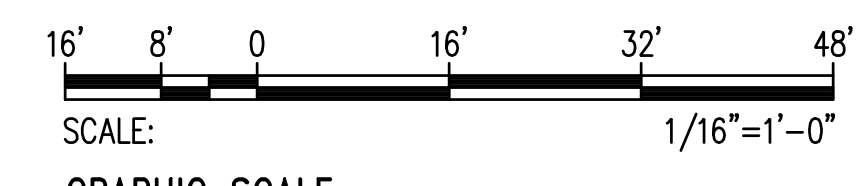
ENLARGED ELECTRICAL PLAN - RM 440
SCALE: 1/8"=1'-0"



ELECTRICAL PLAN - 4TH FLOOR
SCALE: 1/16"=1'-0"



GRAPHIC SCALE

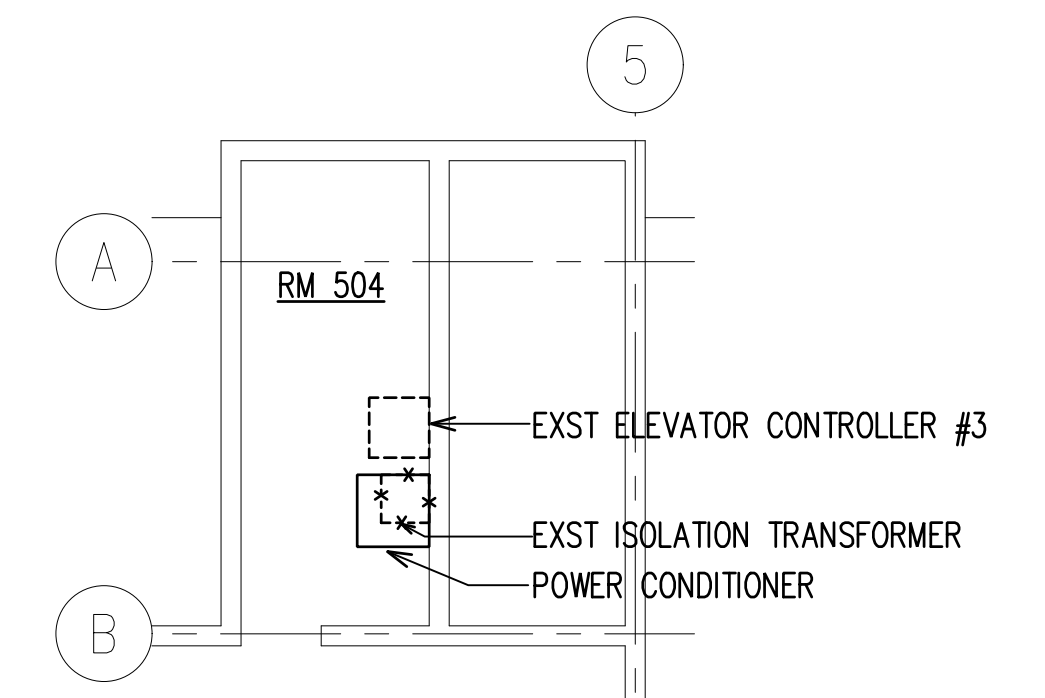
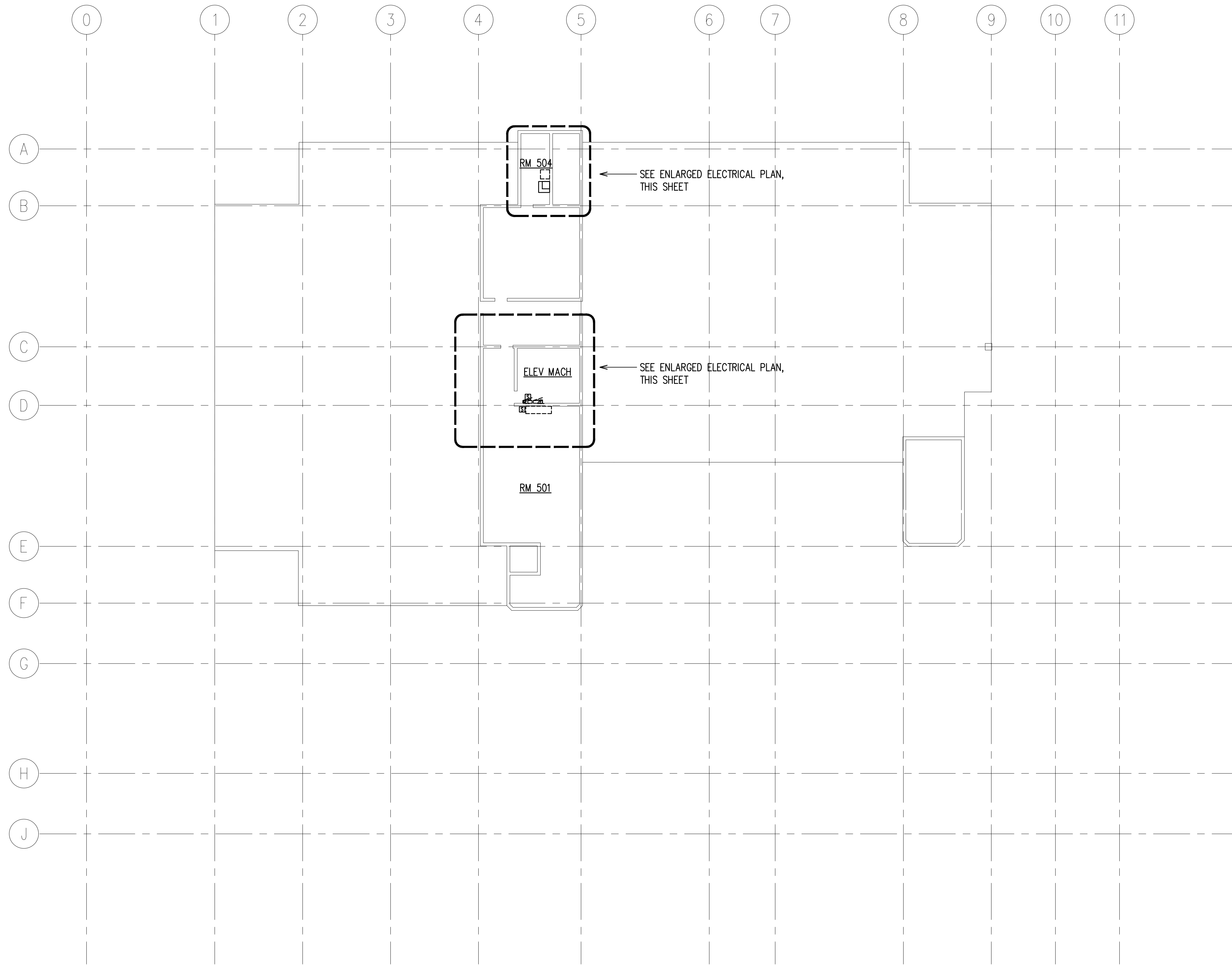


GRAPHIC SCALE

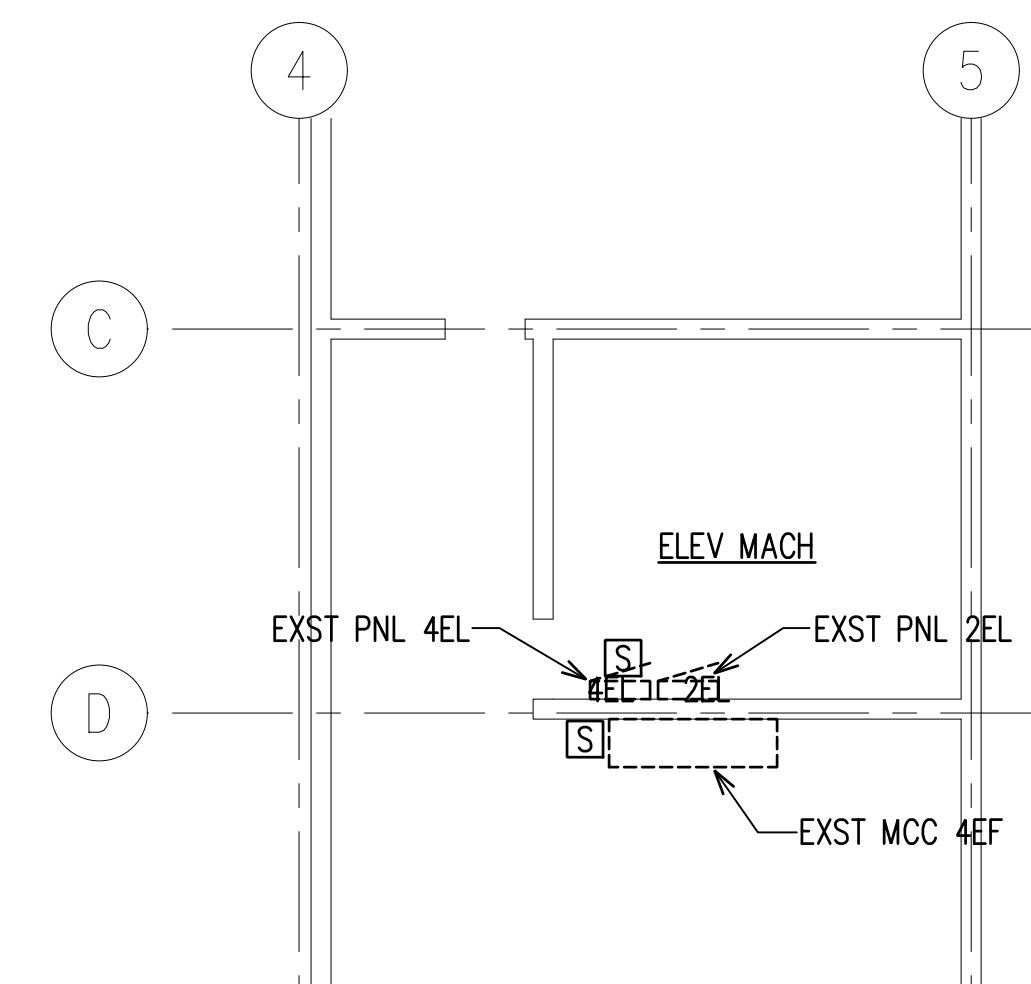
REVISION NO.	SYM.	DESCRIPTION	SHT. OF	DATE	APPROVED; PUBLIC WORKS ADMINISTRATOR

DEPT. OF ACCOUNTING & GENERAL SERVICES PUBLIC WORKS DIVISION STATE OF HAWAII HOAPILI HALE POWER QUALITY SYSTEM IMPROVEMENTS 2145 MAIN STREET, WAILUKU, HAWAII, 96793 WAILUKU TAX MAP KEY: 3-4-013:013 MAUI HAWAII ELECTRICAL PLAN - 4TH FLOOR			
		THIS WORK WAS PREPARED BY ME OR UNDER MY SUPERVISION AND CONSTRUCTION OF THIS PROJECT WILL BE UNDER MY OBSERVATION. 4-30-26 EXP. DATE	
RONALD N.S. HO & ASSOC., INC. DESIGNED BY: RK DRAWN BY: CAD		DACS JOB NO. - DRAWING NO. E207 CHECKED BY: RK APPROVED BY: RK DATE SHEET OF SHITS	
SCALE: AS SHOWN		FILE DRAWER FOLDER	

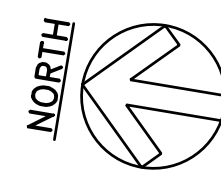
Z:\Acad\projects\224177B\E207_224177B_4th_fir.dwg



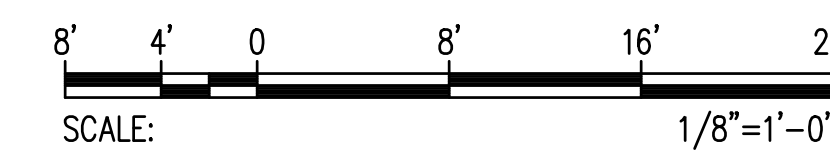
ENLARGED ELECTRICAL PLAN - RM 504
SCALE: 1/8"=1'-0"



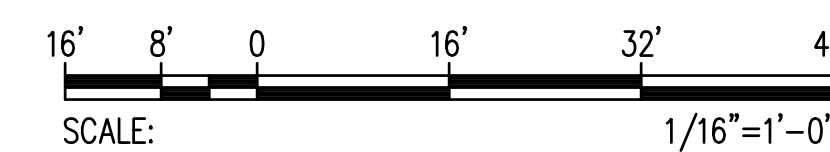
ENLARGED ELECTRICAL PLAN - ELEV MACH
SCALE: 1/8"=1'-0"



ELECTRICAL PLAN - ROOF
SCALE: 1/16"=1'-0"

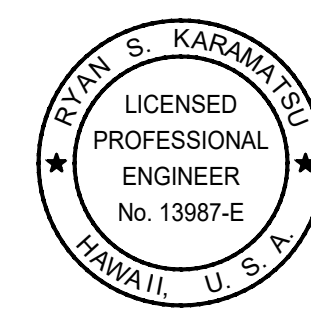


GRAPHIC SCALE

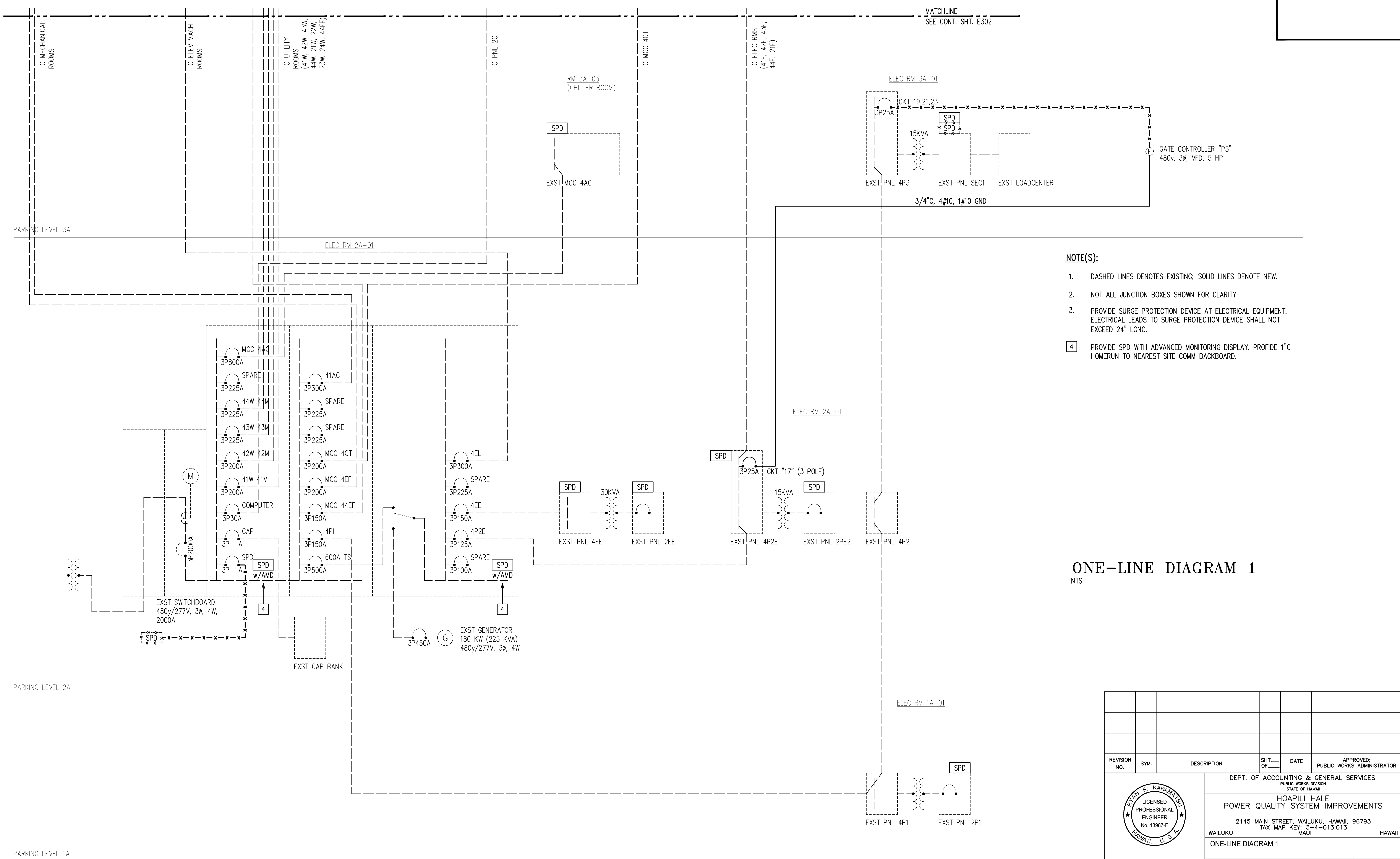


GRAPHIC SCALE

REVISION NO.	SYM.	DESCRIPTION	SHT. OF	DATE	APPROVED; PUBLIC WORKS ADMINISTRATOR
DEPT. OF ACCOUNTING & GENERAL SERVICES PUBLIC WORKS DIVISION STATE OF HAWAII HOAPILI HALE POWER QUALITY SYSTEM IMPROVEMENTS 2145 MAIN STREET, WAILUKU, HAWAII, 96793 WAILUKU TAX MAP KEY: 3-4-013:013 MAUI HAWAII ELECTRICAL PLAN - ROOF					
DESIGNED BY: RK DRAWN BY: CAD		CHECKED BY: RK APPROVED BY: RK		DACS JOB NO. -	DRAWING NO. E208
EXP. DATE 4-30-26				DATE -	SHEET OF
SCALE: AS SHOWN					



THIS WORK WAS PREPARED BY ME OR UNDER MY SUPERVISION AND CONSTRUCTION OF THIS PROJECT WILL BE UNDER MY OBSERVATION.

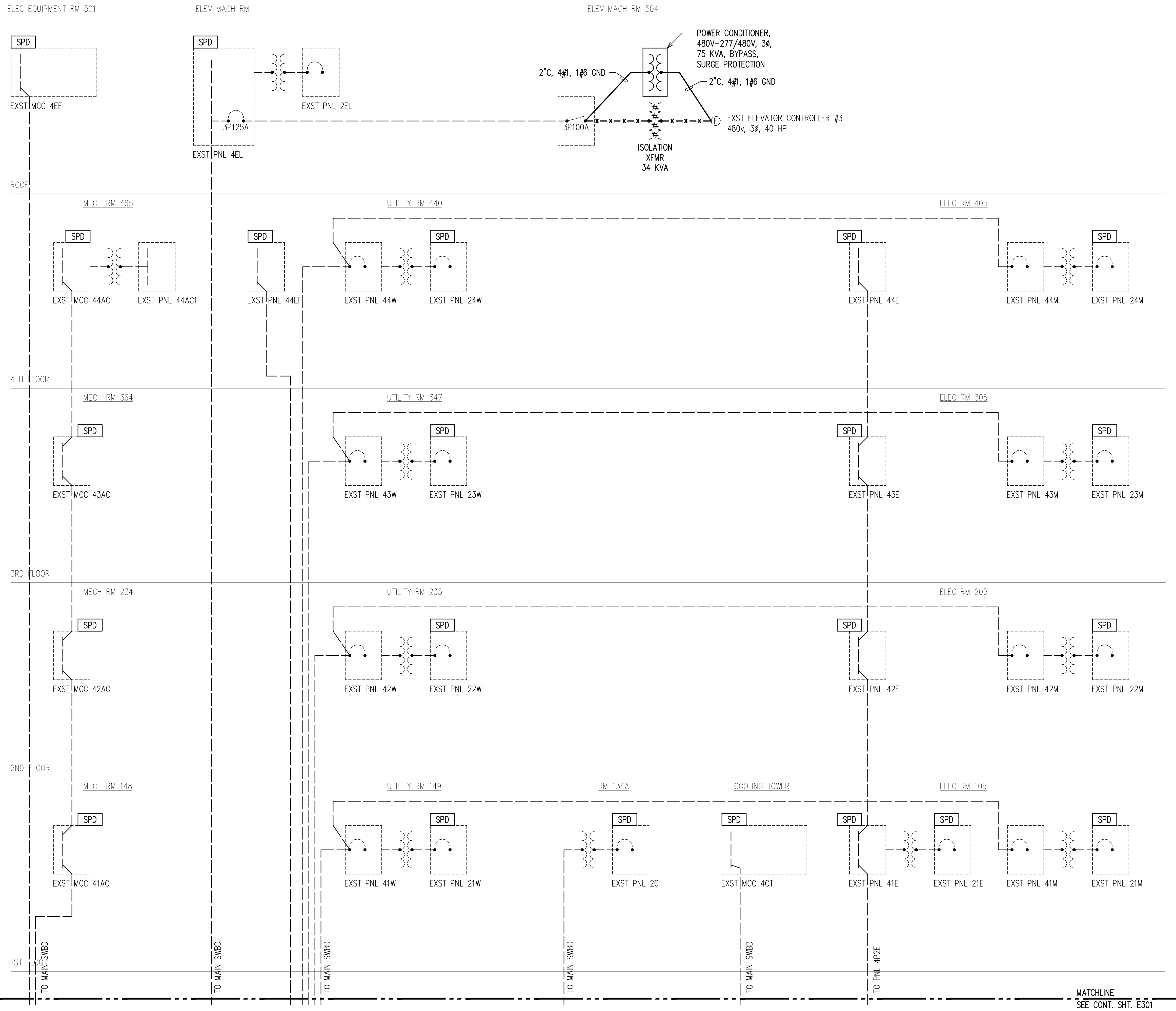


- NOTE(S):**
- DASHED LINES DENOTES EXISTING; SOLID LINES DENOTE NEW.
 - NOT ALL JUNCTION BOXES SHOWN FOR CLARITY.
 - PROVIDE SURGE PROTECTION DEVICE AT ELECTRICAL EQUIPMENT. ELECTRICAL LEADS TO SURGE PROTECTION DEVICE SHALL NOT EXCEED 24" LONG.
 - PROVIDE SPD WITH ADVANCED MONITORING DISPLAY. PROVIDE 1" HOMERUN TO NEAREST SITE COMM BACKBOARD.

ONE-LINE DIAGRAM 1
NTS

REVISION NO.	SYM.	DESCRIPTION	SHT. OF	DATE	APPROVED: PUBLIC WORKS ADMINISTRATOR
DEPT. OF ACCOUNTING & GENERAL SERVICES PUBLIC WORKS DIVISION STATE OF HAWAII HOAPILI HALE POWER QUALITY SYSTEM IMPROVEMENTS 2145 MAIN STREET, WAILUKU, HAWAII, 96793 TAX MAP KEY: 3-4-013:013 WAILUKU MAUI HAWAII					
ONE-LINE DIAGRAM 1					
RONALD N.S. HO & ASSOC., INC. DESIGNED BY: RK DRAWN BY: CAD SCALE: AS SHOWN		DACS JOB NO. - DATE		DRAWING NO. E301 SHEET OF SHITS	

Z:\Acad\projects\224177B\E301_224177B_oneline1.dwg



NOTE(S):

1. DASHED LINES DENOTES EXISTING; SOLID LINES DENOTE NEW.
2. NOT ALL HANDHOLES, MANHOLES, AND JUNCTION BOXES SHOWN.
3. PROVIDE SURGE PROTECTION DEVICE AT ELECTRICAL EQUIPMENT. ELECTRICAL LEADS TO SURGE PROTECTION DEVICE SHALL NOT EXCEED 24" LONG.

ONE-LINE DIAGRAM 2
NTS

REVISION NO.	SYM.	DESCRIPTION	SHT. OF	DATE	APPROVED; PUBLIC WORKS ADMINISTRATOR
DEPT. OF ACCOUNTING & GENERAL SERVICES STATE OF HAWAII HOAPILI HALE POWER QUALITY SYSTEM IMPROVEMENTS 2145 MAIN STREET, WAILUKU, HAWAII, 96793 WAILUKU TAX MAP KEY: 3-4-013:013 MAUI HAWAII					
ONE-LINE DIAGRAM 2					
RONALD N.S. HO & ASSOC., INC. DESIGNED BY: RK DRAWN BY: CAD SCALE: AS SHOWN		CHECKED BY: RK APPROVED BY: RK		DACS JOB NO. -	DRAWING NO. E302 SHEET OF SHITS
THIS WORK WAS PREPARED BY ME OR UNDER MY SUPERVISION AND CONSTRUCTION OF THIS PROJECT WILL BE UNDER MY OBSERVATION. 4-30-26 EXP. DATE					
FILE DRAWER FOLDER.....					

Z:\Acad\projects\224177B\E302-224177B_one-line2.dwg